

**PROPOSED LOT 901  
IN PROPOSED SUBDIVISION OF LOT 733 DP 1314774**

**LEGEND**

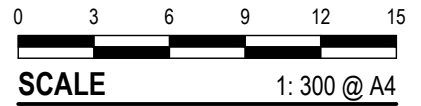
DESIGN SURFACE CONTOUR (0.25m INTERVAL)			ELECTRICAL BOX / PIT / LIGHT POLE (LOCATION TBC)
TREE			NBN PIT
WATER METER (POTABLE & RECYC)			SEWER MANHOLE, MAINTENANCE SHAFT AND CONNECTION
HYDRANT (POTABLE & RECYC)			STORMWATER PITS, PIPE & CONNECTIONS
STOP VALVE (POTABLE & RECYC)			PADMOUNT SUBSTATION
RETAINING WALL			

**SERVICES**

- SEALED ROAD
- RETICULATED WATER (POTABLE AND NON POTABLE)
- RETICULATED SEWER
- UNDERGROUND ELECTRICITY
- UNDERGROUND TELECOMMUNICATIONS (NBN)

**NOTE**

DO NOT SCALE OFF DRAWINGS. USE FIGURED DIMENSIONS ONLY. REPORT ANY DISCREPANCIES TO THE AUTHOR. THIS DRAWING, BEING THE PROPERTY OF KING & CAMPBELL PTY LTD, IS PROTECTED BY COPYRIGHT AND MUST NOT BE USED, REPRODUCED OR COPIED WHOLLY OR IN PART WITHOUT THE WRITTEN PERMISSION OF KING & CAMPBELL PTY LTD. © King & Campbell Pty Ltd



**EASEMENTS**

- (A) EASEMENT FOR DRAINAGE OF SEWAGE 2.5 WIDE
- (C) EASEMENT TO DRAIN WATER 3.5 WIDE

**CAUTION**

THIS PLAN HAS BEEN PREPARED FOR MARKETING PURPOSES ONLY AND DOES NOT FORM PART OF ANY SALES CONTRACT.

THE DIMENSIONS AND AREAS SHOWN HEREIN ARE SUBJECT TO THE PREPARATION OF A PLAN OF SUBDIVISION, APPROVAL BY COUNCIL AND REGISTRATION BY LAND REGISTRY SERVICES NSW.

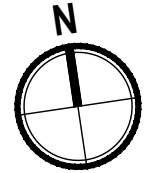
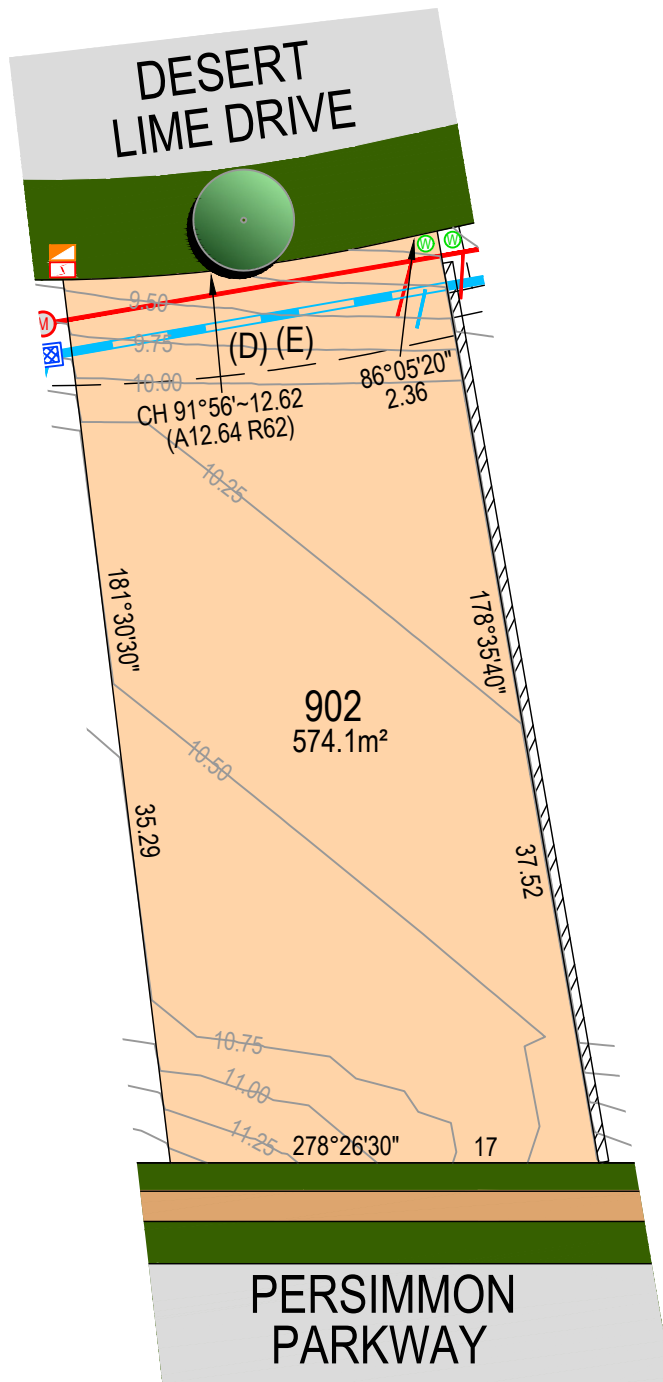
THIS PLAN SHOULD BE READ IN CONJUNCTION WITH THE ACCOMPANYING DRAFT SECTION 88B INSTRUMENT. FULL DETAILS OF EASEMENTS AND ANY RESTRICTIONS ON USE ARE TO BE SET OUT IN THE FINAL SECTION 88B INSTRUMENT TO ACCOMPANY THE FINAL PLAN OF SURVEY FOR THE SUBDIVISION.

EASEMENTS ARE SUBJECT TO COMPLETION OF ENGINEERING DESIGN & CONSTRUCTION AND APPROVAL BY COUNCIL.

PROJECT NO: 7197 ST 9 DATE: APRIL 2026 REVISION: A

King & Campbell Pty Ltd A:PO Box 243 Port Macquarie NSW 2444 T:02 6586 2555  
www.kingcampbell.com.au E:info@kingcampbell.com.au F:02 6583 4064

**THE SANCTUARY  
BRUSH CHERRY BOULEVARD, THRUMSTER**



**PROPOSED LOT 902  
IN PROPOSED SUBDIVISION OF LOT 733 DP 1314774**



**LEGEND**

DESIGN SURFACE CONTOUR (0.25m INTERVAL)			ELECTRICAL BOX / PIT / LIGHT POLE (LOCATION TBC)
TREE			NBN PIT
WATER METER (POTABLE & RECYC)			SEWER MANHOLE, MAINTENANCE SHAFT AND CONNECTION
HYDRANT (POTABLE & RECYC)			STORMWATER PITS, PIPE & CONNECTIONS
STOP VALVE (POTABLE & RECYC)			PADMOUNT SUBSTATION
RETAINING WALL			

**SERVICES**

- SEALED ROAD
- RETICULATED WATER (POTABLE AND NON POTABLE)
- RETICULATED SEWER
- UNDERGROUND ELECTRICITY
- UNDERGROUND TELECOMMUNICATIONS (NBN)

**NOTE**

DO NOT SCALE OFF DRAWINGS. USE FIGURED DIMENSIONS ONLY. REPORT ANY DISCREPANCIES TO THE AUTHOR. THIS DRAWING, BEING THE PROPERTY OF KING & CAMPBELL PTY LTD, IS PROTECTED BY COPYRIGHT AND MUST NOT BE USED, REPRODUCED OR COPIED WHOLLY OR IN PART WITHOUT THE WRITTEN PERMISSION OF KING & CAMPBELL PTY LTD. © King & Campbell Pty Ltd

**EASEMENTS**

- (D) EASEMENT FOR DRAINAGE OF SEWAGE 4.2 WIDE
- (E) EASEMENT TO DRAIN WATER 4.2 WIDE

**CAUTION**

THIS PLAN HAS BEEN PREPARED FOR MARKETING PURPOSES ONLY AND DOES NOT FORM PART OF ANY SALES CONTRACT.

THE DIMENSIONS AND AREAS SHOWN HEREIN ARE SUBJECT TO THE PREPARATION OF A PLAN OF SUBDIVISION, APPROVAL BY COUNCIL AND REGISTRATION BY LAND REGISTRY SERVICES NSW.

THIS PLAN SHOULD BE READ IN CONJUNCTION WITH THE ACCOMPANYING DRAFT SECTION 88B INSTRUMENT. FULL DETAILS OF EASEMENTS AND ANY RESTRICTIONS ON USE ARE TO BE SET OUT IN THE FINAL SECTION 88B INSTRUMENT TO ACCOMPANY THE FINAL PLAN OF SURVEY FOR THE SUBDIVISION.

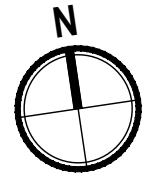
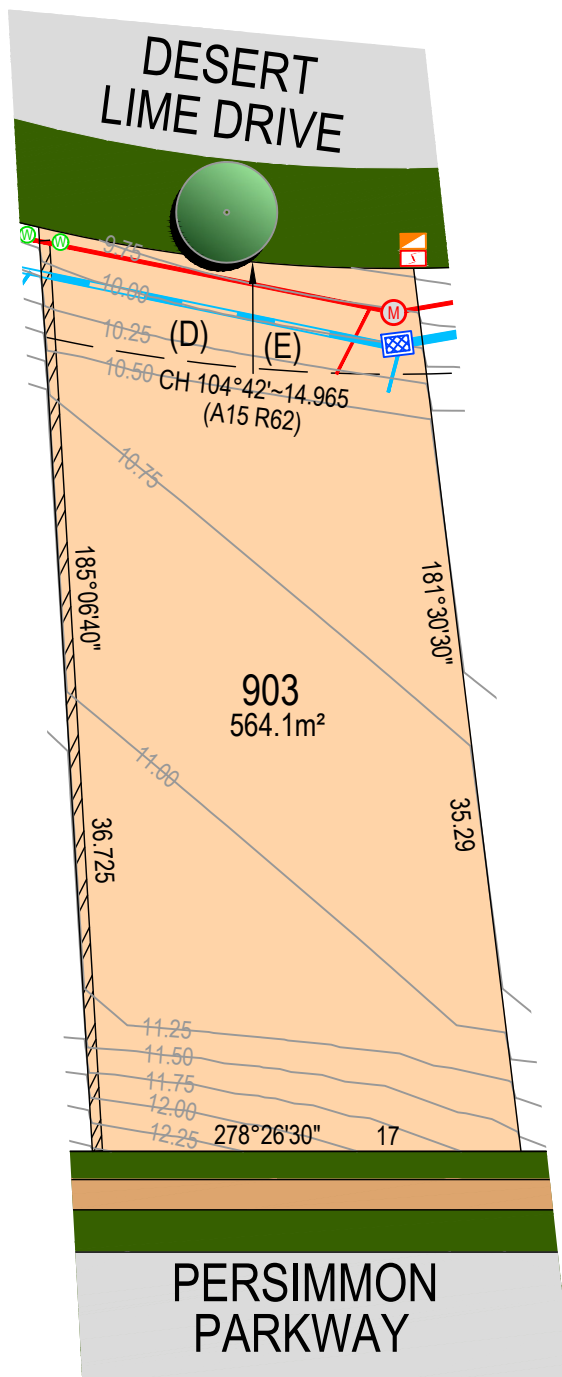
EASEMENTS ARE SUBJECT TO COMPLETION OF ENGINEERING DESIGN & CONSTRUCTION AND APPROVAL BY COUNCIL.

PROJECT NO: 7197 ST 9 DATE: APRIL 2026 REVISION: A

King & Campbell Pty Ltd A:PO Box 243 Port Macquarie NSW 2444 T:02 6586 2555  
www.kingcampbell.com.au E:info@kingcampbell.com.au F:02 6583 4064

**THE SANCTUARY  
BRUSH CHERRY BOULEVARD, THRUMSTER**

**KING + CAMPBELL**



**PROPOSED LOT 903  
IN PROPOSED SUBDIVISION OF LOT 733 DP 1314774**



**SCALE** 1: 300 @ A4

**LEGEND**

DESIGN SURFACE CONTOUR (0.25m INTERVAL)			ELECTRICAL BOX / PIT / LIGHT POLE (LOCATION TBC)
TREE			NBN PIT
WATER METER (POTABLE & RECYC)			SEWER MANHOLE, MAINTENANCE SHAFT AND CONNECTION
HYDRANT (POTABLE & RECYC)			STORMWATER PITS, PIPE & CONNECTIONS
STOP VALVE (POTABLE & RECYC)			PADMOUNT SUBSTATION
RETAINING WALL			

**SERVICES**

- SEALED ROAD
- RETICULATED WATER (POTABLE AND NON POTABLE)
- RETICULATED SEWER
- UNDERGROUND ELECTRICITY
- UNDERGROUND TELECOMMUNICATIONS (NBN)

**NOTE**

DO NOT SCALE OFF DRAWINGS. USE FIGURED DIMENSIONS ONLY. REPORT ANY DISCREPANCIES TO THE AUTHOR. THIS DRAWING, BEING THE PROPERTY OF KING & CAMPBELL PTY LTD, IS PROTECTED BY COPYRIGHT AND MUST NOT BE USED, REPRODUCED OR COPIED WHOLLY OR IN PART WITHOUT THE WRITTEN PERMISSION OF KING & CAMPBELL PTY LTD. © King & Campbell Pty Ltd

**EASEMENTS**

- (D) EASEMENT FOR DRAINAGE OF SEWAGE 4.2 WIDE
- (E) EASEMENT TO DRAIN WATER 4.2 WIDE

**CAUTION**

THIS PLAN HAS BEEN PREPARED FOR MARKETING PURPOSES ONLY AND DOES NOT FORM PART OF ANY SALES CONTRACT.

THE DIMENSIONS AND AREAS SHOWN HEREIN ARE SUBJECT TO THE PREPARATION OF A PLAN OF SUBDIVISION, APPROVAL BY COUNCIL AND REGISTRATION BY LAND REGISTRY SERVICES NSW.

THIS PLAN SHOULD BE READ IN CONJUNCTION WITH THE ACCOMPANYING DRAFT SECTION 88B INSTRUMENT. FULL DETAILS OF EASEMENTS AND ANY RESTRICTIONS ON USE ARE TO BE SET OUT IN THE FINAL SECTION 88B INSTRUMENT TO ACCOMPANY THE FINAL PLAN OF SURVEY FOR THE SUBDIVISION.

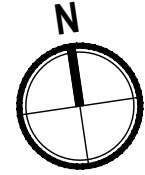
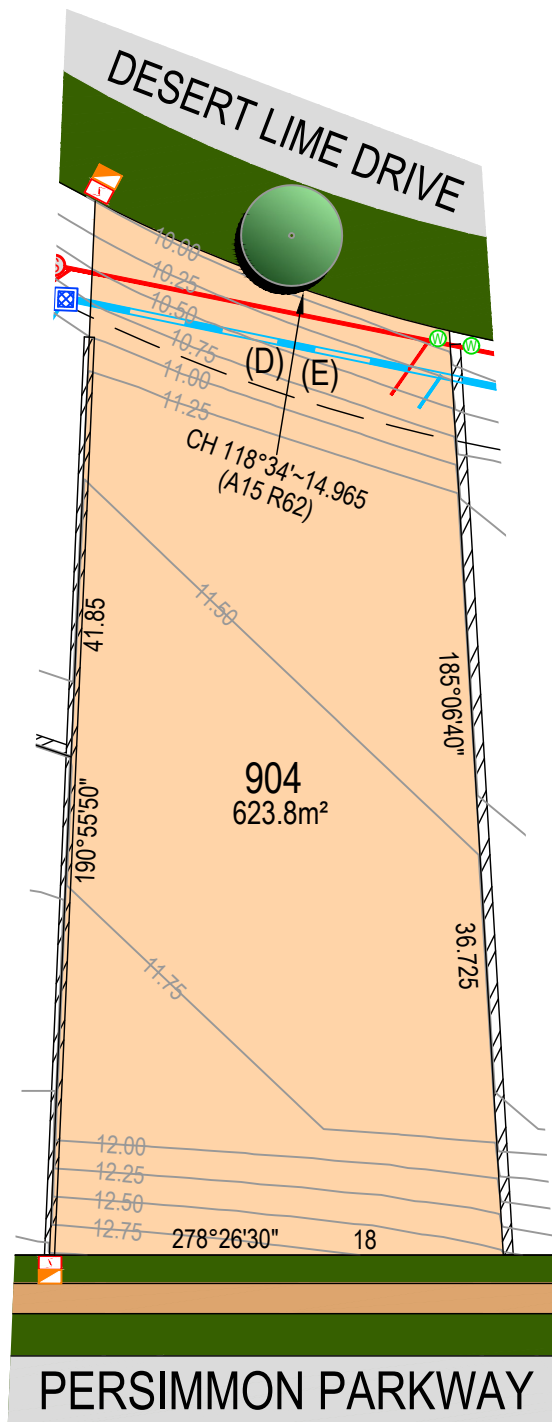
EASEMENTS ARE SUBJECT TO COMPLETION OF ENGINEERING DESIGN & CONSTRUCTION AND APPROVAL BY COUNCIL.

PROJECT NO: 7197 ST 9 DATE: APRIL 2026 REVISION: A

King & Campbell Pty Ltd A:PO Box 243 Port Macquarie NSW 2444 T:02 6586 2555  
www.kingcampbell.com.au E:info@kingcampbell.com.au F:02 6583 4064

**THE SANCTUARY  
BRUSH CHERRY BOULEVARD, THRUMSTER**

**KING + CAMPBELL**



**PROPOSED LOT 904  
IN PROPOSED SUBDIVISION OF LOT 733 DP 1314774**

**LEGEND**

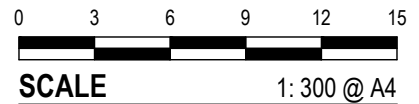
DESIGN SURFACE CONTOUR (0.25m INTERVAL)			ELECTRICAL BOX / PIT / LIGHT POLE (LOCATION TBC)
TREE			NBN PIT
WATER METER (POTABLE & RECYC)			SEWER MANHOLE, MAINTENANCE SHAFT AND CONNECTION
HYDRANT (POTABLE & RECYC)			STORMWATER PITS, PIPE & CONNECTIONS
STOP VALVE (POTABLE & RECYC)			RETAINING WALL
			PADMOUNT SUBSTATION

**SERVICES**

- SEALED ROAD
- RETICULATED WATER (POTABLE AND NON POTABLE)
- RETICULATED SEWER
- UNDERGROUND ELECTRICITY
- UNDERGROUND TELECOMMUNICATIONS (NBN)

**NOTE**

DO NOT SCALE OFF DRAWINGS. USE FIGURED DIMENSIONS ONLY. REPORT ANY DISCREPANCIES TO THE AUTHOR. THIS DRAWING, BEING THE PROPERTY OF KING & CAMPBELL PTY LTD, IS PROTECTED BY COPYRIGHT AND MUST NOT BE USED, REPRODUCED OR COPIED WHOLLY OR IN PART WITHOUT THE WRITTEN PERMISSION OF KING & CAMPBELL PTY LTD. © King & Campbell Pty Ltd



**EASEMENTS**

- (D) EASEMENT FOR DRAINAGE OF SEWAGE 4.2 WIDE
- (E) EASEMENT TO DRAIN WATER 4.2 WIDE

**CAUTION**

THIS PLAN HAS BEEN PREPARED FOR MARKETING PURPOSES ONLY AND DOES NOT FORM PART OF ANY SALES CONTRACT.

THE DIMENSIONS AND AREAS SHOWN HEREIN ARE SUBJECT TO THE PREPARATION OF A PLAN OF SUBDIVISION, APPROVAL BY COUNCIL AND REGISTRATION BY LAND REGISTRY SERVICES NSW.

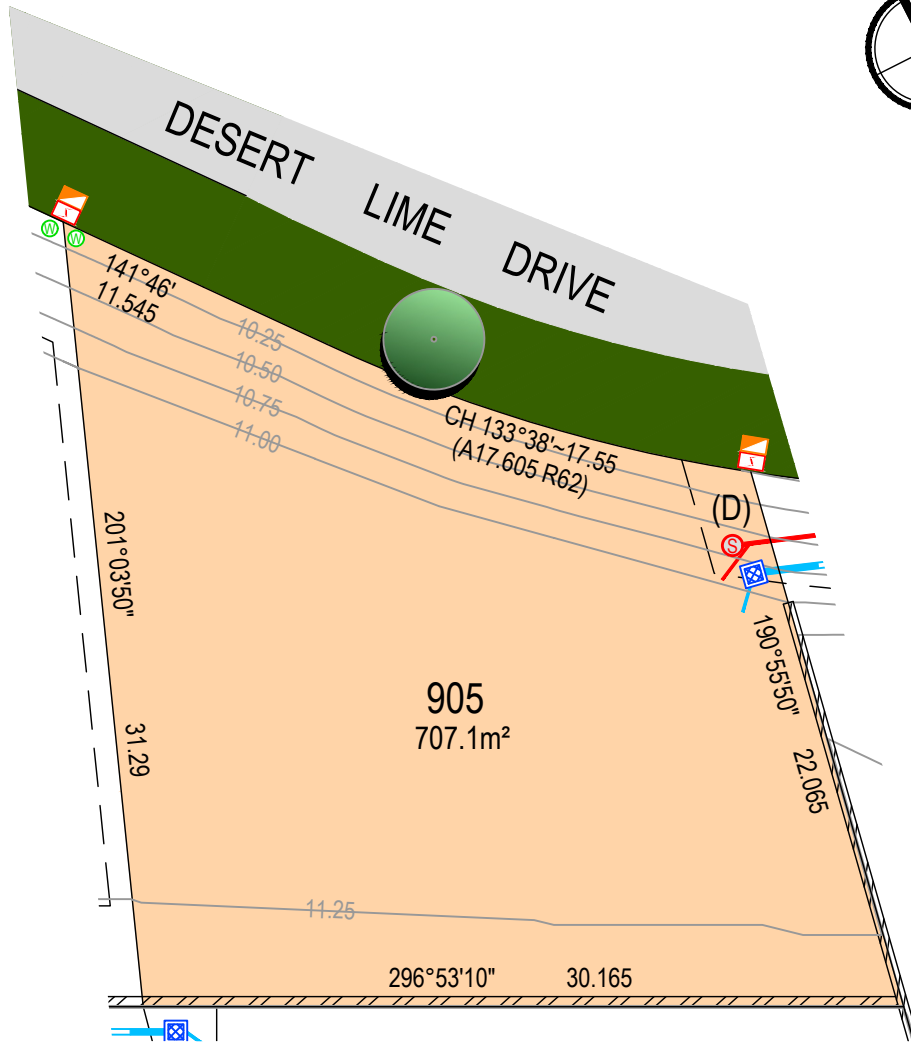
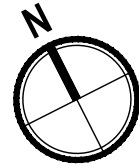
THIS PLAN SHOULD BE READ IN CONJUNCTION WITH THE ACCOMPANYING DRAFT SECTION 88B INSTRUMENT. FULL DETAILS OF EASEMENTS AND ANY RESTRICTIONS ON USE ARE TO BE SET OUT IN THE FINAL SECTION 88B INSTRUMENT TO ACCOMPANY THE FINAL PLAN OF SURVEY FOR THE SUBDIVISION.

EASEMENTS ARE SUBJECT TO COMPLETION OF ENGINEERING DESIGN & CONSTRUCTION AND APPROVAL BY COUNCIL.

PROJECT NO: 7197 ST 9 DATE: APRIL 2026 REVISION: A

King & Campbell Pty Ltd A:PO Box 243 Port Macquarie NSW 2444 T:02 6586 2555  
www.kingcampbell.com.au E:info@kingcampbell.com.au F:02 6583 4064

**THE SANCTUARY  
BRUSH CHERRY BOULEVARD, THRUMSTER**



## PROPOSED LOT 905 IN PROPOSED SUBDIVISION OF LOT 733 DP 1314774

### LEGEND

DESIGN SURFACE CONTOUR (0.25m INTERVAL)		12.4		ELECTRICAL BOX / PIT / LIGHT POLE (LOCATION TBC)
TREE				NBN PIT
WATER METER (POTABLE & RECYC)				SEWER MANHOLE, MAINTENANCE SHAFT AND CONNECTION
HYDRANT (POTABLE & RECYC)				STORMWATER PITS, PIPE & CONNECTIONS
STOP VALVE (POTABLE & RECYC)				PADMOUNT SUBSTATION
RETAINING WALL				

### SERVICES

SEALED ROAD  
RETICULATED WATER (POTABLE AND NON POTABLE)  
RETICULATED SEWER  
UNDERGROUND ELECTRICITY  
UNDERGROUND TELECOMMUNICATIONS (NBN)

### NOTE

DO NOT SCALE OFF DRAWINGS. USE FIGURED DIMENSIONS ONLY. REPORT ANY DISCREPANCIES TO THE AUTHOR. THIS DRAWING, BEING THE PROPERTY OF KING & CAMPBELL PTY LTD, IS PROTECTED BY COPYRIGHT AND MUST NOT BE USED, REPRODUCED OR COPIED WHOLLY OR IN PART WITHOUT THE WRITTEN PERMISSION OF KING & CAMPBELL PTY LTD. © King & Campbell Pty Ltd

0 3 6 9 12 15

**SCALE** 1: 300 @ A4

### EASEMENTS

(D) EASEMENT FOR DRAINAGE OF SEWAGE 4.2 WIDE

### CAUTION

THIS PLAN HAS BEEN PREPARED FOR MARKETING PURPOSES ONLY AND DOES NOT FORM PART OF ANY SALES CONTRACT.

THE DIMENSIONS AND AREAS SHOWN HEREIN ARE SUBJECT TO THE PREPARATION OF A PLAN OF SUBDIVISION, APPROVAL BY COUNCIL AND REGISTRATION BY LAND REGISTRY SERVICES NSW.

THIS PLAN SHOULD BE READ IN CONJUNCTION WITH THE ACCOMPANYING DRAFT SECTION 88B INSTRUMENT. FULL DETAILS OF EASEMENTS AND ANY RESTRICTIONS ON USE ARE TO BE SET OUT IN THE FINAL SECTION 88B INSTRUMENT TO ACCOMPANY THE FINAL PLAN OF SURVEY FOR THE SUBDIVISION.

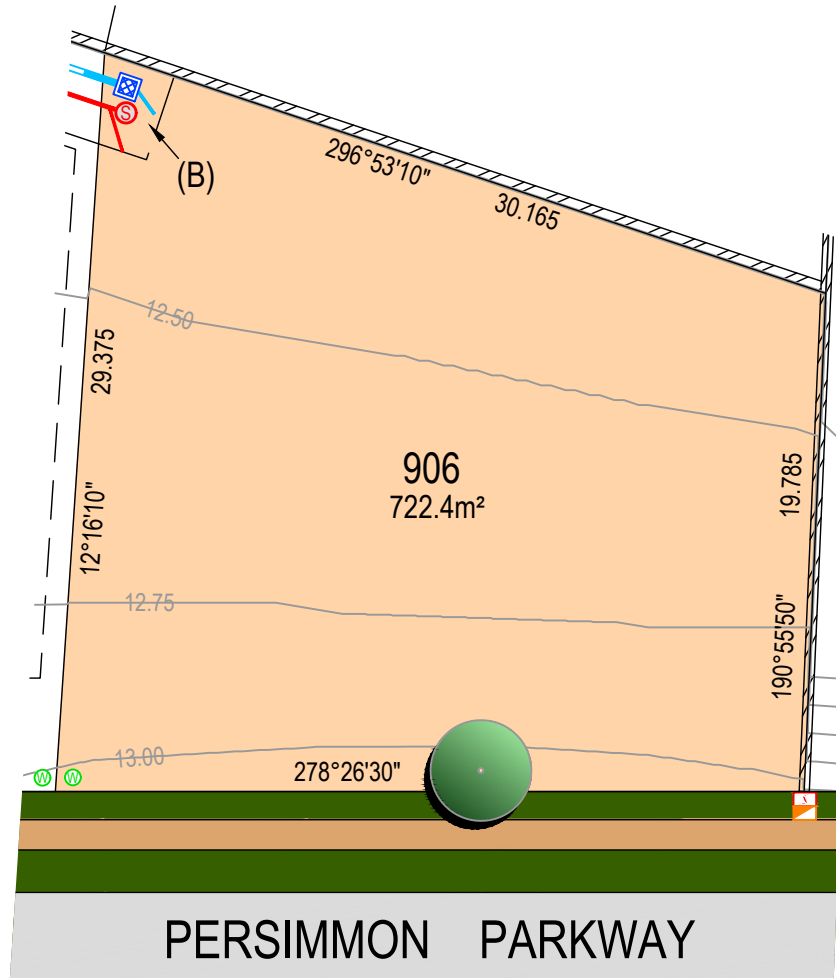
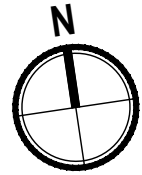
EASEMENTS ARE SUBJECT TO COMPLETION OF ENGINEERING DESIGN & CONSTRUCTION AND APPROVAL BY COUNCIL.

PROJECT NO: 7197 ST 9 DATE: APRIL 2026 REVISION: A

King & Campbell Pty Ltd A:PO Box 243 Port Macquarie NSW 2444 T:02 6586 2555  
www.kingcampbell.com.au E:info@kingcampbell.com.au F:02 6583 4064

# THE SANCTUARY

## BRUSH CHERRY BOULEVARD, THRUMSTER



**PROPOSED LOT 906  
IN PROPOSED SUBDIVISION OF LOT 733 DP 1314774**

**LEGEND**

DESIGN SURFACE CONTOUR (0.25m INTERVAL)			ELECTRICAL BOX / PIT / LIGHT POLE (LOCATION TBC)
TREE			NBN PIT
WATER METER (POTABLE & RECYC)			SEWER MANHOLE, MAINTENANCE SHAFT AND CONNECTION
HYDRANT (POTABLE & RECYC)			STORMWATER PITS, PIPE & CONNECTIONS
STOP VALVE (POTABLE & RECYC)			PADMOUNT SUBSTATION
RETAINING WALL			

**SERVICES**

- SEALED ROAD
- RETICULATED WATER (POTABLE AND NON POTABLE)
- RETICULATED SEWER
- UNDERGROUND ELECTRICITY
- UNDERGROUND TELECOMMUNICATIONS (NBN)

**NOTE**

DO NOT SCALE OFF DRAWINGS. USE FIGURED DIMENSIONS ONLY. REPORT ANY DISCREPANCIES TO THE AUTHOR. THIS DRAWING, BEING THE PROPERTY OF KING & CAMPBELL PTY LTD, IS PROTECTED BY COPYRIGHT AND MUST NOT BE USED, REPRODUCED OR COPIED WHOLLY OR IN PART WITHOUT THE WRITTEN PERMISSION OF KING & CAMPBELL PTY LTD. © King & Campbell Pty Ltd



**SCALE**

1: 300 @ A4

**EASEMENTS**

- (B) EASEMENT FOR DRAINAGE OF SEWAGE 3.5 WIDE

**CAUTION**

THIS PLAN HAS BEEN PREPARED FOR MARKETING PURPOSES ONLY AND DOES NOT FORM PART OF ANY SALES CONTRACT.

THE DIMENSIONS AND AREAS SHOWN HEREIN ARE SUBJECT TO THE PREPARATION OF A PLAN OF SUBDIVISION, APPROVAL BY COUNCIL AND REGISTRATION BY LAND REGISTRY SERVICES NSW.

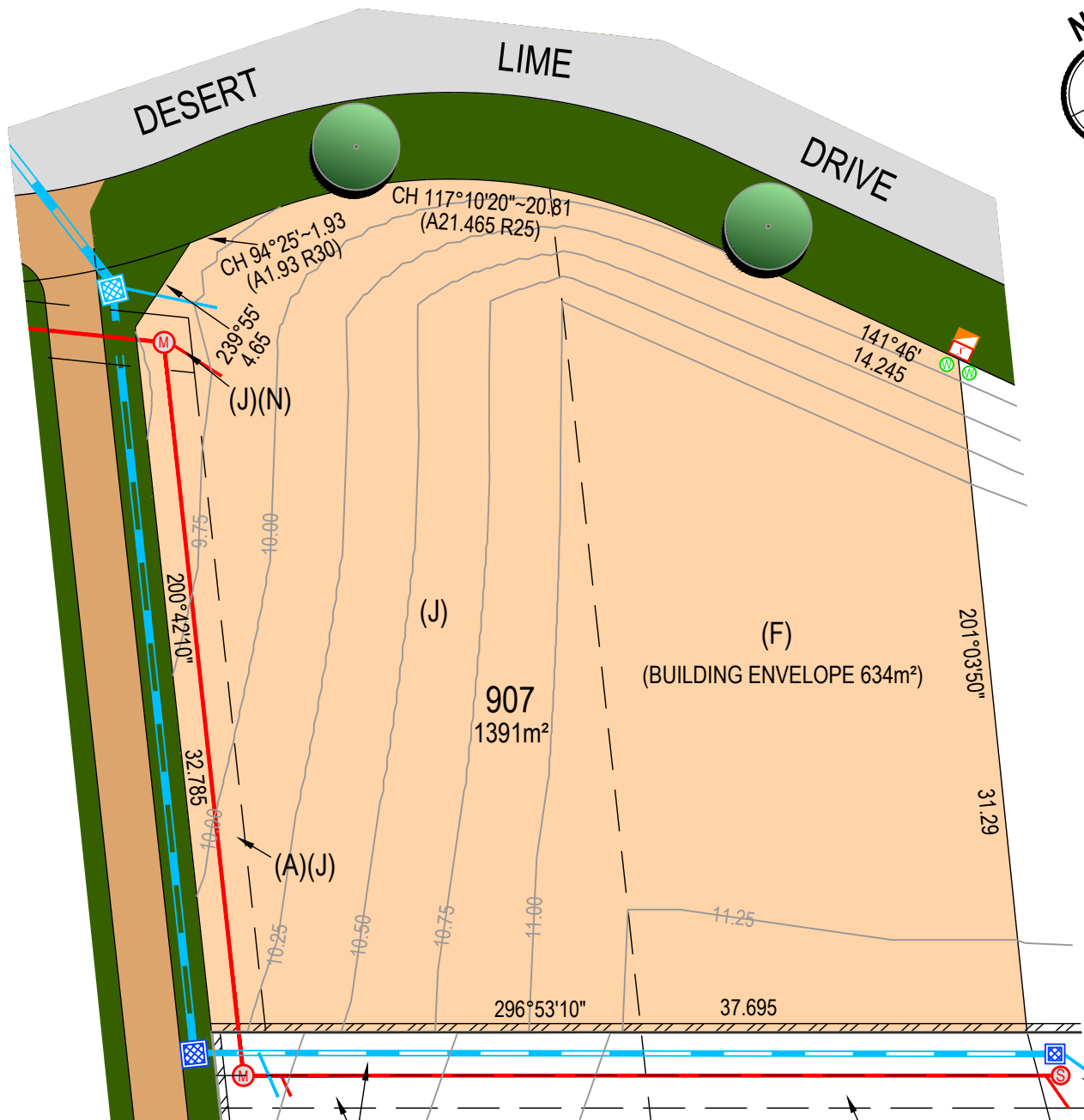
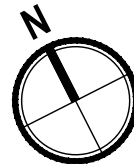
THIS PLAN SHOULD BE READ IN CONJUNCTION WITH THE ACCOMPANYING DRAFT SECTION 88B INSTRUMENT. FULL DETAILS OF EASEMENTS AND ANY RESTRICTIONS ON USE ARE TO BE SET OUT IN THE FINAL SECTION 88B INSTRUMENT TO ACCOMPANY THE FINAL PLAN OF SURVEY FOR THE SUBDIVISION.

EASEMENTS ARE SUBJECT TO COMPLETION OF ENGINEERING DESIGN & CONSTRUCTION AND APPROVAL BY COUNCIL.

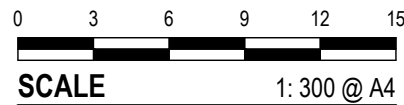
PROJECT NO: 7197 ST 9 DATE: APRIL 2026 REVISION: A

King & Campbell Pty Ltd A:PO Box 243 Port Macquarie NSW 2444 T:02 6586 2555  
www.kingcampbell.com.au E:info@kingcampbell.com.au F:02 6583 4064

**THE SANCTUARY**  
**BRUSH CHERRY BOULEVARD, THRUMSTER**



## PROPOSED LOT 907 IN PROPOSED SUBDIVISION OF LOT 733 DP 1314774



### LEGEND

DESIGN SURFACE CONTOUR (0.25m INTERVAL)		12.4		ELECTRICAL BOX / PIT / LIGHT POLE (LOCATION TBC)
TREE				NBN PIT
WATER METER (POTABLE & RECYC)				SEWER MANHOLE, MAINTENANCE SHAFT AND CONNECTION
HYDRANT (POTABLE & RECYC)				STORMWATER PITS, PIPE & CONNECTIONS
STOP VALVE (POTABLE & RECYC)				PADMOUNT SUBSTATION
RETAINING WALL				

### SERVICES

SEALED ROAD  
RETICULATED WATER (POTABLE AND NON POTABLE)  
RETICULATED SEWER  
UNDERGROUND ELECTRICITY  
UNDERGROUND TELECOMMUNICATIONS (NBN)

### NOTE

DO NOT SCALE OFF DRAWINGS. USE FIGURED DIMENSIONS ONLY. REPORT ANY DISCREPANCIES TO THE AUTHOR. THIS DRAWING, BEING THE PROPERTY OF KING & CAMPBELL PTY LTD, IS PROTECTED BY COPYRIGHT AND MUST NOT BE USED, REPRODUCED OR COPIED WHOLLY OR IN PART WITHOUT THE WRITTEN PERMISSION OF KING & CAMPBELL PTY LTD. © King & Campbell Pty Ltd

### EASEMENTS

- (A) EASEMENT FOR DRAINAGE OF SEWAGE 2.5 WIDE
- (F) RESTRICTION ON THE USE OF LAND (BUILDING ENVELOPE)
- (J) POSITIVE COVENANT (ASSET PROTECTION ZONE)
- (N) EASEMENT FOR DRAINAGE OF SEWAGE VARIABLE WIDTH

### CAUTION

THIS PLAN HAS BEEN PREPARED FOR MARKETING PURPOSES ONLY AND DOES NOT FORM PART OF ANY SALES CONTRACT.

THE DIMENSIONS AND AREAS SHOWN HEREIN ARE SUBJECT TO THE PREPARATION OF A PLAN OF SUBDIVISION, APPROVAL BY COUNCIL AND REGISTRATION BY LAND REGISTRY SERVICES NSW.

THIS PLAN SHOULD BE READ IN CONJUNCTION WITH THE ACCOMPANYING DRAFT SECTION 88B INSTRUMENT. FULL DETAILS OF EASEMENTS AND ANY RESTRICTIONS ON USE ARE TO BE SET OUT IN THE FINAL SECTION 88B INSTRUMENT TO ACCOMPANY THE FINAL PLAN OF SURVEY FOR THE SUBDIVISION.

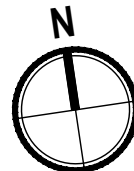
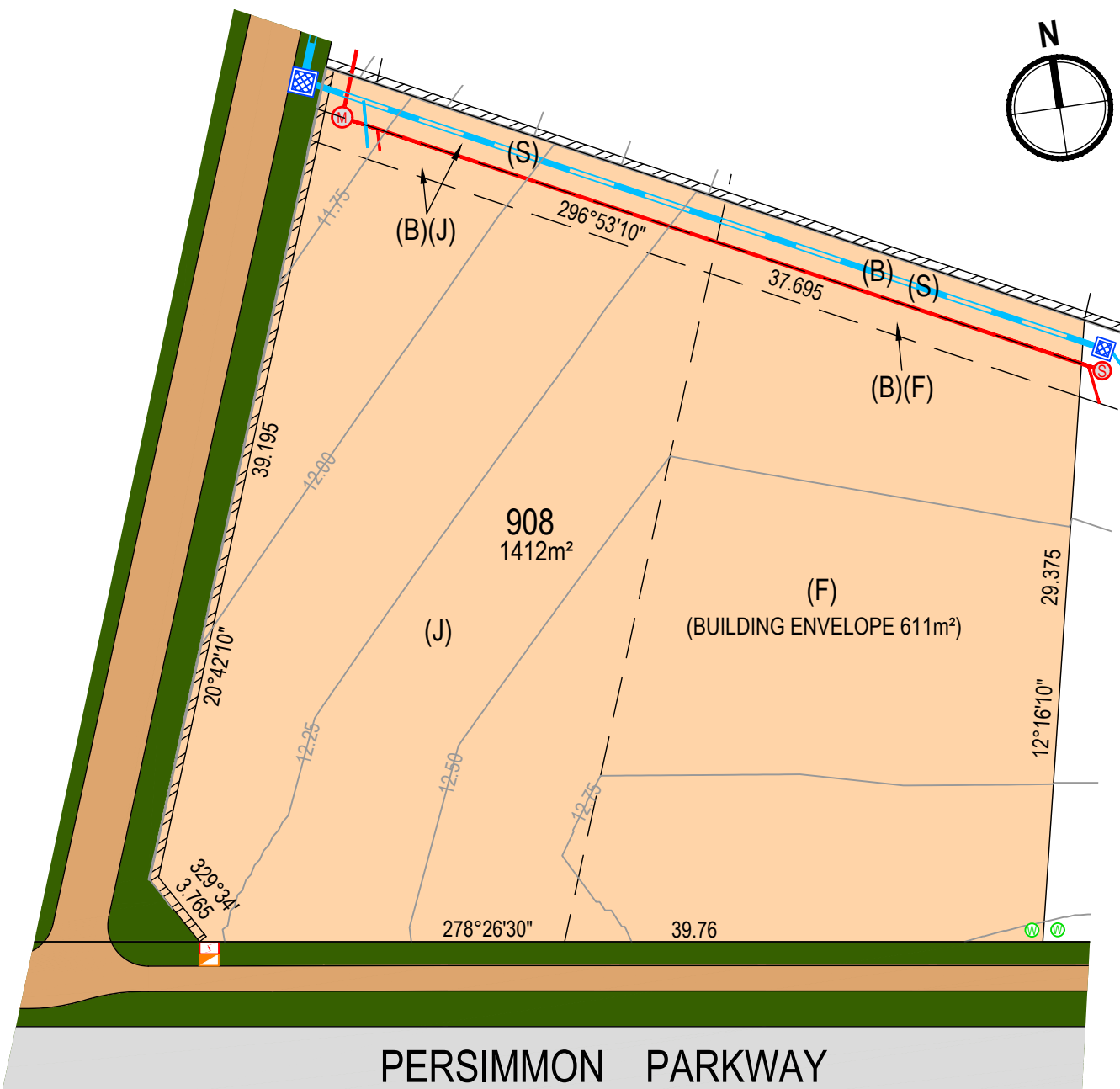
EASEMENTS ARE SUBJECT TO COMPLETION OF ENGINEERING DESIGN & CONSTRUCTION AND APPROVAL BY COUNCIL.

PROJECT NO: 7197 ST 9 DATE: APRIL 2026 REVISION: A

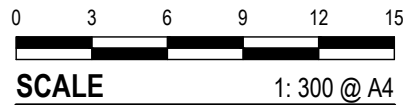
King & Campbell Pty Ltd A:PO Box 243 Port Macquarie NSW 2444 T:02 6586 2555  
www.kingcampbell.com.au E:info@kingcampbell.com.au F:02 6583 4064

# THE SANCTUARY

## BRUSH CHERRY BOULEVARD, THRUMSTER



**PROPOSED LOT 908  
IN PROPOSED SUBDIVISION OF LOT 733 DP 1314774**



**LEGEND**

DESIGN SURFACE CONTOUR (0.25m INTERVAL)		12.4		ELECTRICAL BOX / PIT / LIGHT POLE (LOCATION TBC)
TREE				NBN PIT
WATER METER (POTABLE & RECYC)				SEWER MANHOLE, MAINTENANCE SHAFT AND CONNECTION
HYDRANT (POTABLE & RECYC)				STORMWATER PITS, PIPE & CONNECTIONS
STOP VALVE (POTABLE & RECYC)				PADMOUNT SUBSTATION
RETAINING WALL				

**SERVICES**

- SEALED ROAD
- RETICULATED WATER (POTABLE AND NON POTABLE)
- RETICULATED SEWER
- UNDERGROUND ELECTRICITY
- UNDERGROUND TELECOMMUNICATIONS (NBN)

**NOTE**

DO NOT SCALE OFF DRAWINGS. USE FIGURED DIMENSIONS ONLY. REPORT ANY DISCREPANCIES TO THE AUTHOR. THIS DRAWING, BEING THE PROPERTY OF KING & CAMPBELL PTY LTD, IS PROTECTED BY COPYRIGHT AND MUST NOT BE USED, REPRODUCED OR COPIED WHOLLY OR IN PART WITHOUT THE WRITTEN PERMISSION OF KING & CAMPBELL PTY LTD. © King & Campbell Pty Ltd

**EASEMENTS**

- (B) EASEMENT FOR DRAINAGE OF SEWAGE 3.5 WIDE
- (F) RESTRICTION ON THE USE OF LAND (BUILDING ENVELOPE)
- (J) POSITIVE COVENANT (ASSET PROTECTION ZONE)
- (S) EASEMENT TO DRAIN WATER 2 WIDE

**CAUTION**

THIS PLAN HAS BEEN PREPARED FOR MARKETING PURPOSES ONLY AND DOES NOT FORM PART OF ANY SALES CONTRACT.

THE DIMENSIONS AND AREAS SHOWN HEREIN ARE SUBJECT TO THE PREPARATION OF A PLAN OF SUBDIVISION, APPROVAL BY COUNCIL AND REGISTRATION BY LAND REGISTRY SERVICES NSW.

THIS PLAN SHOULD BE READ IN CONJUNCTION WITH THE ACCOMPANYING DRAFT SECTION 88B INSTRUMENT. FULL DETAILS OF EASEMENTS AND ANY RESTRICTIONS ON USE ARE TO BE SET OUT IN THE FINAL SECTION 88B INSTRUMENT TO ACCOMPANY THE FINAL PLAN OF SURVEY FOR THE SUBDIVISION.

EASEMENTS ARE SUBJECT TO COMPLETION OF ENGINEERING DESIGN & CONSTRUCTION AND APPROVAL BY COUNCIL.

PROJECT NO: 7197 ST 9 DATE: APRIL 2026 REVISION: A

King & Campbell Pty Ltd A:PO Box 243 Port Macquarie NSW 2444 T:02 6586 2555  
www.kingcampbell.com.au E:info@kingcampbell.com.au F:02 6583 4064

**THE SANCTUARY**  
**BRUSH CHERRY BOULEVARD, THRUMSTER**

**KING + CAMPBELL**