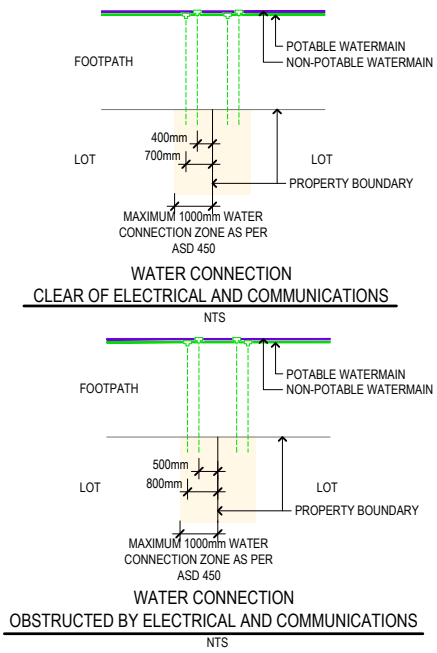


- LEGEND**
- PROPOSED SEWER LINE WITH MANHOLE & JUNCTION
 - SEWER MANHOLE LABEL - PROPOSED, FUTURE
 - FUTURE SEWER LINE WITH MANHOLE
 - EXISTING POTABLE WATER MAIN WITH HYDRANT & STOP VALVE
 - EXISTING NON-POTABLE WATER MAIN WITH HYDRANT & STOP VALVE
 - PROPOSED POTABLE WATER MAIN
 - PROPOSED NON-POTABLE WATER MAIN
 - PROPOSED POTABLE WATER HYDRANT, STOP VALVE & TEE
 - PROPOSED NON-POTABLE WATER HYDRANT, STOP VALVE & TEE
 - PROPOSED WATER MAIN WITH BENDS 11.25° & 22.5°
 - 20mm WATER PROPERTY SERVICE UNLESS NOTED OTHERWISE (POTABLE & NON POTABLE) INC TAPPING BANDS AND PROVISION FOR FUTURE METERS. TO BE IN 100mm CONDUIT WHERE UNDER ROAD PAVEMENT
 - EXTENT OF WORKS

- NOTES**
- SEE SHEET 01 FOR WATER MAIN AND SEWER NOTES
 - WATERMAINS UNDER ROAD PAVEMENTS ARE TO BE CLASS 16/PN16, SERIES II, RRJ mPVC TO AS/NZS 4765 OR OPVC TO AS/NZS 4441 OR HDPE PE100 PN16. PIPES TO BE LIGHT BLUE IN COLOUR OR BLUE STRIPE FOR HDPE
 - THE CONTRACTOR MUST PLACE BENDS IN THE POSITIONS GENERALLY AS SHOWN ON THE PLANS AND ARE NOT TO DELETE A BEND WITHOUT EXPRESS APPROVAL OF COUNCIL'S DEVELOPMENT SUPERVISOR.
 - ENSURE MINIMUM CLEARANCE OF WATERMAINS HORIZONTAL - 300mm BETWEEN PIPES, VERTICAL - 150mm BETWEEN PIPES IN ACCORDANCE WITH ASD 406.
 - TRENCH STOPS TO BE INSTALLED IN WATERMAIN TRENCHES WHERE GRADE EXCEEDS 10% IN ACCORDANCE WITH ASD 431
 - WATER MAIN THRUST BLOCKS TO BE INSTALLED IN ACCORDANCE WITH ASD 433
 - ALL SEWER MANHOLES TO BE POSITIONED TO ACHIEVE 1m MINIMUM CLEARANCE TO ADJACENT PROPERTY BOUNDARIES.



THIS DRAWING INCLUDES INFORMATION IN COLOUR. IF YOU HAVE A BLACK AND WHITE COPY YOU DON'T HAVE ALL THE INFORMATION. THIS NOTE IS COLOURED RED.

K&C REF: 01197, The Sanctuary Stage 5 and 6 Plan Set 01, 7197P, Stage 5 and 6 Plan.dwg, Sewer Water 01, 13 May 2025, branc

ORIGIN OF LEVELS: PM 74301 RL 10.845 AHD

KING + CAMPBELL

King & Campbell Pty Ltd
www.kingcampbell.com.au
A: PO Box 243 Port Macquarie NSW 2444
T: 02 6586 2555
F: 02 6583 4064
E: info@kingcampbell.com.au

REV.	DATE	DESCRIPTION	BY
A	30.04.2025	ISSUED FOR SWC APPROVAL	JJ

DATUM: AHD
SCALE: 1:500 @ A1
(1:1000 @ A3)

NOTE: DO NOT SCALE OFF DRAWINGS. USE FIGURED DIMENSIONS ONLY. REPORT ANY DISCREPANCIES TO THE AUTHOR. THIS DRAWING, BEING THE PROPERTY OF KING & CAMPBELL PTY LTD, IS PROTECTED BY COPYRIGHT AND MUST NOT BE USED, REPRODUCED OR COPIED WHOLLY, OR IN PART WITHOUT THE WRITTEN PERMISSION OF KING & CAMPBELL PTY LTD.

© King & Campbell Pty Ltd
NOMINATED ARCHITECT: NIGEL SWIFT - NSW ARB NO 7025 / OLD ARB NO 3957

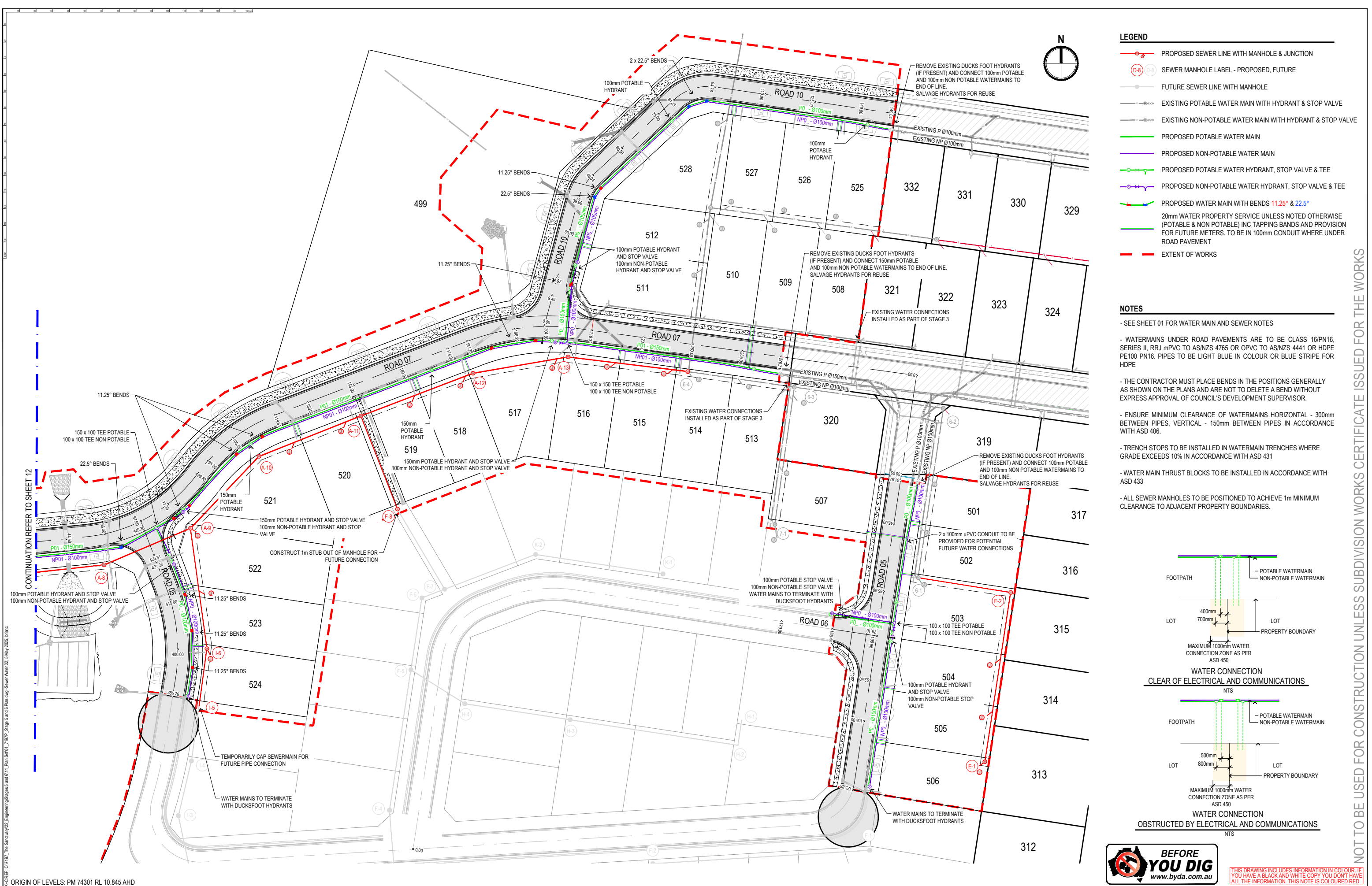
PROJECT NO:	7197
DA NO.:	2014-114
DESIGNED BY:	JJBC
DRAWN BY:	JJ
CHECKED BY:	SM
DATE CREATED:	FEB 2025

DRAWING TITLE:	SEWER & WATER PLAN 01
PROJECT:	THE SANCTUARY STAGE 5 LOT 300, DP 1307775 - JOHN OXLEY DRIVE, THURMSTER
CLIENT:	BIRD IN THE HAND 2 PTY LTD.

DRAWING NO:	SHEET:	REVISION:
01_7197P_Stage 5 and 6 Plan	12 OF 55	A

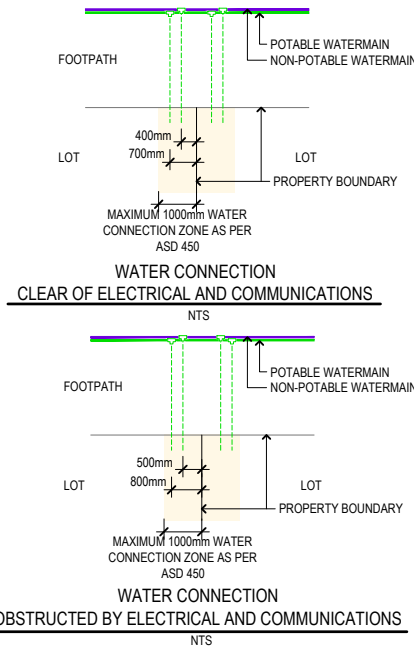
NOT TO BE USED FOR CONSTRUCTION UNLESS SUBDIVISION WORKS CERTIFICATE ISSUED FOR THE WORKS

A1



- LEGEND**
- PROPOSED SEWER LINE WITH MANHOLE & JUNCTION
 - SEWER MANHOLE LABEL - PROPOSED, FUTURE
 - FUTURE SEWER LINE WITH MANHOLE
 - EXISTING POTABLE WATER MAIN WITH HYDRANT & STOP VALVE
 - EXISTING NON-POTABLE WATER MAIN WITH HYDRANT & STOP VALVE
 - PROPOSED POTABLE WATER MAIN
 - PROPOSED NON-POTABLE WATER MAIN
 - PROPOSED POTABLE WATER HYDRANT, STOP VALVE & TEE
 - PROPOSED NON-POTABLE WATER HYDRANT, STOP VALVE & TEE
 - PROPOSED WATER MAIN WITH BENDS 11.25° & 22.5°
 - 20mm WATER PROPERTY SERVICE UNLESS NOTED OTHERWISE (POTABLE & NON POTABLE) INC TAPPING BANDS AND PROVISION FOR FUTURE METERS. TO BE IN 100mm CONDUIT WHERE UNDER ROAD PAVEMENT
 - EXTENT OF WORKS

- NOTES**
- SEE SHEET 01 FOR WATER MAIN AND SEWER NOTES
 - WATERMAINS UNDER ROAD PAVEMENTS ARE TO BE CLASS 16/PN16, SERIES II, RRJ mPVC TO AS/NZS 4765 OR OPVC TO AS/NZS 4441 OR HDPE PE100 PN16. PIPES TO BE LIGHT BLUE IN COLOUR OR BLUE STRIPE FOR HDPE
 - THE CONTRACTOR MUST PLACE BENDS IN THE POSITIONS GENERALLY AS SHOWN ON THE PLANS AND ARE NOT TO DELETE A BEND WITHOUT EXPRESS APPROVAL OF COUNCIL'S DEVELOPMENT SUPERVISOR.
 - ENSURE MINIMUM CLEARANCE OF WATERMAINS HORIZONTAL - 300mm BETWEEN PIPES, VERTICAL - 150mm BETWEEN PIPES IN ACCORDANCE WITH ASD 406.
 - TRENCH STOPS TO BE INSTALLED IN WATERMAIN TRENCHES WHERE GRADE EXCEEDS 10% IN ACCORDANCE WITH ASD 431
 - WATER MAIN THRUST BLOCKS TO BE INSTALLED IN ACCORDANCE WITH ASD 433
 - ALL SEWER MANHOLES TO BE POSITIONED TO ACHIEVE 1m MINIMUM CLEARANCE TO ADJACENT PROPERTY BOUNDARIES.



THIS DRAWING INCLUDES INFORMATION IN COLOUR. IF YOU HAVE A BLACK AND WHITE COPY YOU DON'T HAVE ALL THE INFORMATION. THIS NOTE IS COLOURED RED.